

facts

waycross-ware

Waycross is the largest city, in the largest county, in the largest state, east of the Mississippi River.

Waycross is located in the heart of Southeast Georgia, at the northern tip of the Okefenokee National Wildlife Refuge. It is a city filled with Southern hospitality and charm. From the Historic Downtown district to the swamplands of the Okefenokee, there is something for everyone. Visitors can experience the traditional down-home cooking at the local restaurants and slip away into comfort at one of several accommodations. Attractions such as the Okefenokee Swamp Park and Obediah's Okefenok, give an in-depth look at a one of a kind ecosystem, including the wildlife, plant-life, and pioneer life in the area. Train enthusiasts can catch a glimpse of the train traffic coming in and out of the second largest computerized yard for CSX in the U.S. by relaxing on the Visitor Center patio in Downtown. For those who love history, there are the Okefenokee Heritage Center and Southern Forest World museums, and a Historic Walking Tour guide book available for the Downtown area.

Whether you are staying over-night or just traveling through, Waycross will be a place to remember.

Waycross began as a crossroads for southeastern travel. We were first a hub for stagecoach traffic, and then became a center for the railroad when it laid its tracks in the mid 1800's. As the Plant System Railroad started to grow, so did the town surrounding it.

Streets were placed in the pattern of the Maltese Cross which was part of the Plant System Railroad's logo, and a new city was born. It is said that someone traveling with the Railroad gave Waycross its name, because he stated that this was "where the ways crossed", others will claim that Waycross was so named because it was "the way of the cross", due to numerous churches being built here in those days.

We have the largest CSX computerized rail yard on the East Coast, which means that Waycross is still the center of all rail traffic coming through the southeast area. The Historic Passenger Rail Depot was built in the early 1900's to replace the original depot that was destroyed by fire after a train derailment. This building was restored in 1998 to house the Waycross Tourism Bureau and Visitor Center, the Waycross-Ware County Chamber of Commerce, and other local offices, which are still there today.

Other parts of the Historic Downtown area are also being refurbished.

The Railway Express Agency (REA) building was restored in 2001 as a 400-seat banquet and reception hall, and one of the oldest hotels in Waycross, The Phoenix Hotel has recently undergone a \$7.4 million dollar renovation to become corporate offices for the Jones Company and new store fronts.

Besides the Railroad, Waycross has a few other claims to fame. It is the north entrance to Okefenokee Swamp, a 450,000 acre National Wildlife Refuge that has a one-of-a-kind ecosystem, found nowhere else in the

PEDIATRIC DENTISTS

WILLIAM C. HURST, SR., DMD
MARLIN S. JOHNSON, DMD

Members of the American Academy of Pediatric Dentistry



410 Lister Street
Waycross, Ga. 31501

912-285-1218

DID YOU KNOW...

City of Waycross Projected
Population 2010: 15,579

Ware County Projected
Population 2010: 36,051

Ware Area Projected
Population 2010: 169,652

Ware County Per
Capita Income: \$22,362.00

Ware County contains
2,000 square miles

Latitude: 31.25N

Longitude: -82.40W

Elevation: 140'

ON THE WEB

City of Waycross

<http://www.waycrossga.com>

Ware County Government

<http://www.warecounty.com/>

Ware County Schools

<http://www.ware.k12.ga.us/>

Waycross Tourism Bureau

<http://www.swampgeorgia.com/>

Okefenokee Area Development Authority

www.oada.org

Waycross Main Street

<http://www.downtownwaycross.org/>

Waycross College

<http://www.waycross.edu/>

Okefenokee Technical College

<http://www.okefenokeetech.edu/>

Satilla Regional Medical Center

<http://www.satilla.org/>

Okefenokee Swamp Park

<http://www.okeswamp.com/>

Obediah's Okefenokee

<http://www.okefenokeeswamp.com/>

Laura S. Walker State Park

<http://gastateparks.org/info/lwalker/>

Trade the street lights for star light

FINANCING AVAILABLE FOR:

- PURCHASE OF LAND AND HOMES
- PROPERTY IMPROVEMENTS
- VEHICLES AND EQUIPMENT
- TIMBER TRACTS
- AND MUCH MORE!

AgSouth
Farm Credit, ACA

www.agsouthfc.com



111 Carter Avenue | Blackshear, GA 31516 | 912.449.4701

Contact: Dan Good, Susan Smith or Jon Harris

Opening Doors To Great Banking



Atlantic
Coast
Bank 
AtlanticCoastBank.net

Atlantic Coast Bank can help you with all your banking needs.

- Check out our *Ultimate Checking* account and get more earning power on your deposit dollars.
- Earn BIG with the *Gold Coast Money Market* account - our high-interest money market that maximizes your earning potential.
- We can help you finance your dreams with a *Home Equity Line of Credit*. At Atlantic Coast, we make it easy to get the things you want, and need!
- Relocating? We have the perfect *mortgage* for every budget and every lifestyle.

Stop by or give us a call today!

912-283-4711

Waycross Locations

505 Haines Avenue

2110 Memorial Drive



Member FDIC

facts

waycross-ware

Experience Waycross-Ware County

STATE OFFICES

**Department of Corrections,
State Probation Office**
306 Albany Avenue
912-287-6535

106 Albany Avenue
912-285-6323

County Extension Service
3015 State Street
912-287-2456

**Department of Family and
Children Services**
1200 Plant Avenue
912-285-6042

Georgia Forestry Commission
2999 Forest Road
912-338-5967

Department of Labor
600 Plant Avenue
912-285-6180
www.dol.state.ga.us

**Department of Natural
Resources**
108 Darling Avenue
912-285-6094

Georgia State Patrol
3029 Memorial Drive
912-287-6500

Driver's License
912-285-6296

Georgia National Guard
(Det-1, 648th Engineer Battalion)
718 Garlington Avenue
912-285-6056

Department of Transportation
104 Nicholls Street
912-285-6009.

Ware State Prison
3620 Harris Road
912-285-6400

The Georgia State Government
website is <http://www.georgia.gov/>

FEDERAL GOVERNMENT OFFICES

**USDA Agriculture Stabilization
and Conversation Service**
601 Tebeau Street, #211
912-283-6420

Post Office
601 Tebeau Street
912-287-8110

Manor Post Office
6247 Valdosta Hwy.
Manor, GA
912-285-1595

Millwood Post Office
8161 Albany Avenue
Millwood, GA
912-283-1089

Waresboro Post Office
4308 Albany Avenue
Waresboro, GA
912-283-7762

LOCAL OFFICES

Waycross Housing Authority
1130 Tebeau Street
912-287-2440

Okefenokee Humane Society
1501 Blackwell Street
912-283-4214

Poison Control
800-222-1222

**Satilla Water and Sewer
Authority**
1991 Albany Avenue
912-287-4366

**Ware County Board of
Registrars Courthouse**
#B68
912-287-4363

**Child Care Resource and
Referral of South Georgia**
1235 McDonald Street
912-338-9000.

Concerted Services, Inc.
2100 Riverside Avenue
912-285-6083.
(social services and community support)

DISTANCES TO AREA TOWNS AND CITIES

Blackshear, GA: 9 miles
Alma GA: 23 miles
Homerville, GA: 26 miles
Folkston, GA: 33 miles
Douglas, GA: 36 miles
Jesup, GA: 39 miles
Baxley, GA: 39.0 miles
Hazelhurst, GA: 48.5 miles
Kingsland, GA: 49 miles
Brunswick, GA: 59 miles
Valdosta, GA: 62 miles
Tifton, GA: 73 miles

DISTANCES TO SOUTHEASTERN CITIES

Albany, GA: 113 miles
Atlanta, GA: 235 miles
Athens, GA: 253 miles
Augusta, GA: 172 miles
Columbus, GA 197 miles
Fernandina Beach, FL: 79 miles
Jacksonville, FL: 78 miles
Macon, GA: 159 miles
Orlando, FL: 223 miles
Savannah, GA: 103 miles
Tallahassee, FL: 139 Miles

world. Waycross was also home to "The Green Frog" restaurant, which was built here in the 1930's by the Darden brothers, who went on to open a famous chain of restaurants called "Red Lobster."

Other historical facts about Waycross include being the childhood home of Pernell Roberts, Gram Parsons, and Ozzie Davis, the birthplace of Burt Reynolds, and home to two of the largest frozen food industries in the country.

Waycross/Ware County is a place of business and industrial development and southern hospitality. Visitors can enjoy learning more about the history of our area by stopping at the Visitor Center to pick up a Historic Walking Tour Booklet and taking a stroll through Downtown. You can also visit our two museums to learn more about the pioneer, Native American, and environmental history of the area.

TOP 10 EMPLOYERS

- Baptist Village Inc
- Carolina Skiff
- Clayton Homes
- Okefenokee Technical College
- Satilla Regional Medical Center
- The Mall at Waycross
- Voith Fabrics
- Wal-Mart Supercenter
- Ware Correctional Institute
- Ware County School System

WEATHER

Average Winter High: 60.4°

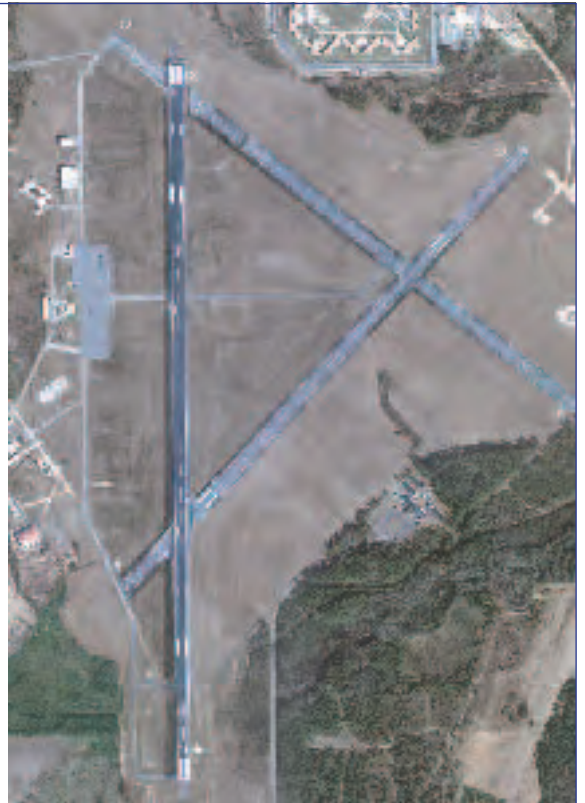
Average Winter Low: 35.7°

Average Summer High: 94.2°

Average Summer Low: 71.3°

Average Annual Precipitation: 50.3"

WAYCROSS/WARE AIRPORT



3098 Keen Drive
Waycross
Georgia
31503

Telephone: 912-287-4400 912-287-4392
 Fax: 912-287-4401
 Email: wareairport@warecounty.com
 Web site: warecounty.com/airport.asp

Runway

18/36

Dimensions

6000 x 100 ft. / 1829 x 30 m

Weight bearing capacity

Single wheel: 45000 lbs

Double wheel: 70000 lbs

Runway

5/23

Dimensions

5035 x 100 ft. / 1535 x 30 m

Weight bearing capacity

Single wheel 18,000 lbs

Runway

13/31

Dimensions

3528 x 100 ft. / 1075 x 30 m

Weight bearing capacity

Single wheel 18,000 lbs

Airport Services | Airport management | Aviation fuel
 Aircraft parking (ramp or tiedown) | Hangars
 Hangar leasing / sales | Internet | Meteorlogix weather
 Passenger terminal and lounge | Aerial photography
 Aircraft maintenance | Catering | Pilot's Lounge
 Pilot supplies | Rental Cars | TV